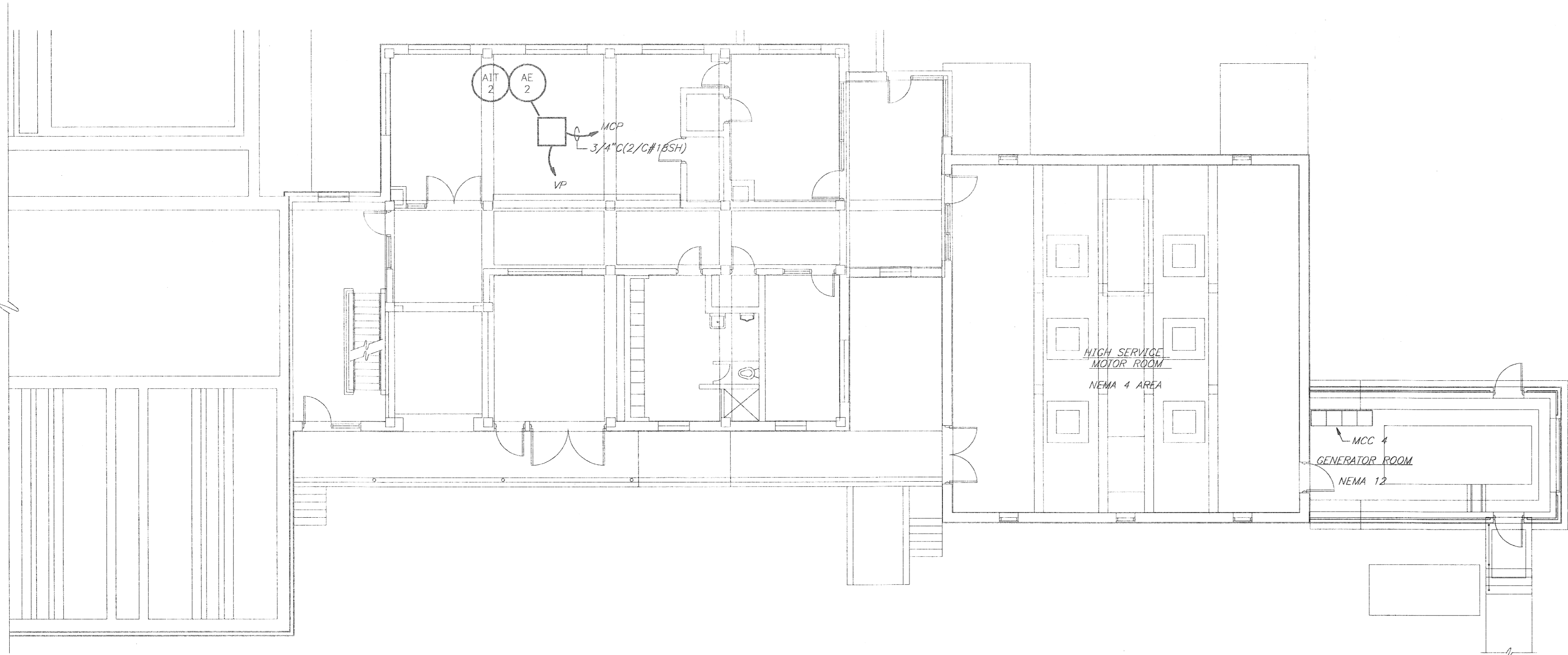


REV	DESCRIPTION	BY	DATE	CHK'D
△	ISSUED FOR REBID		1/9/95	
△				
△				
△				

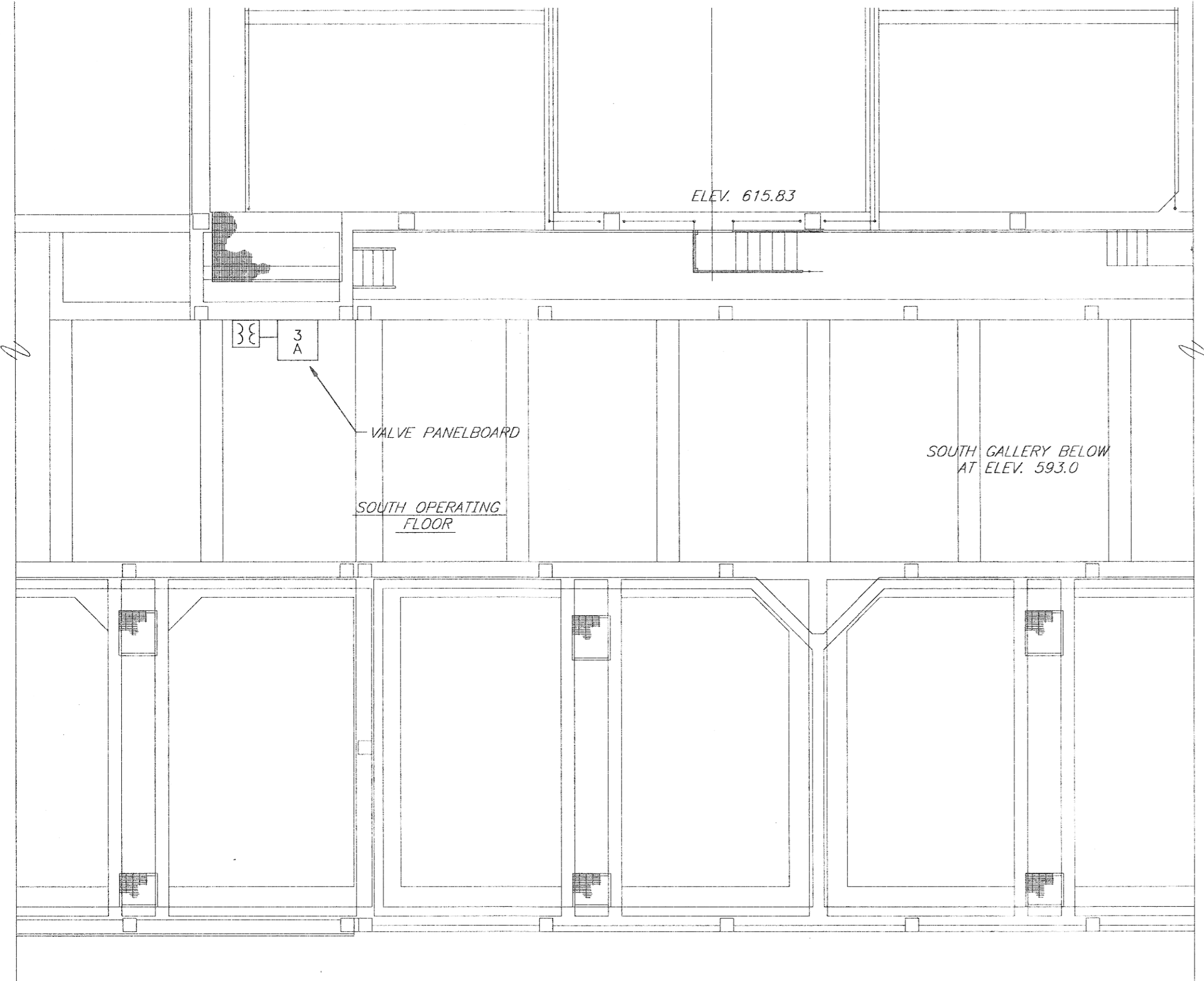


OFFICE AND LAB  
BUILDING

FIRST FLOOR  
NEMA 12 AREA

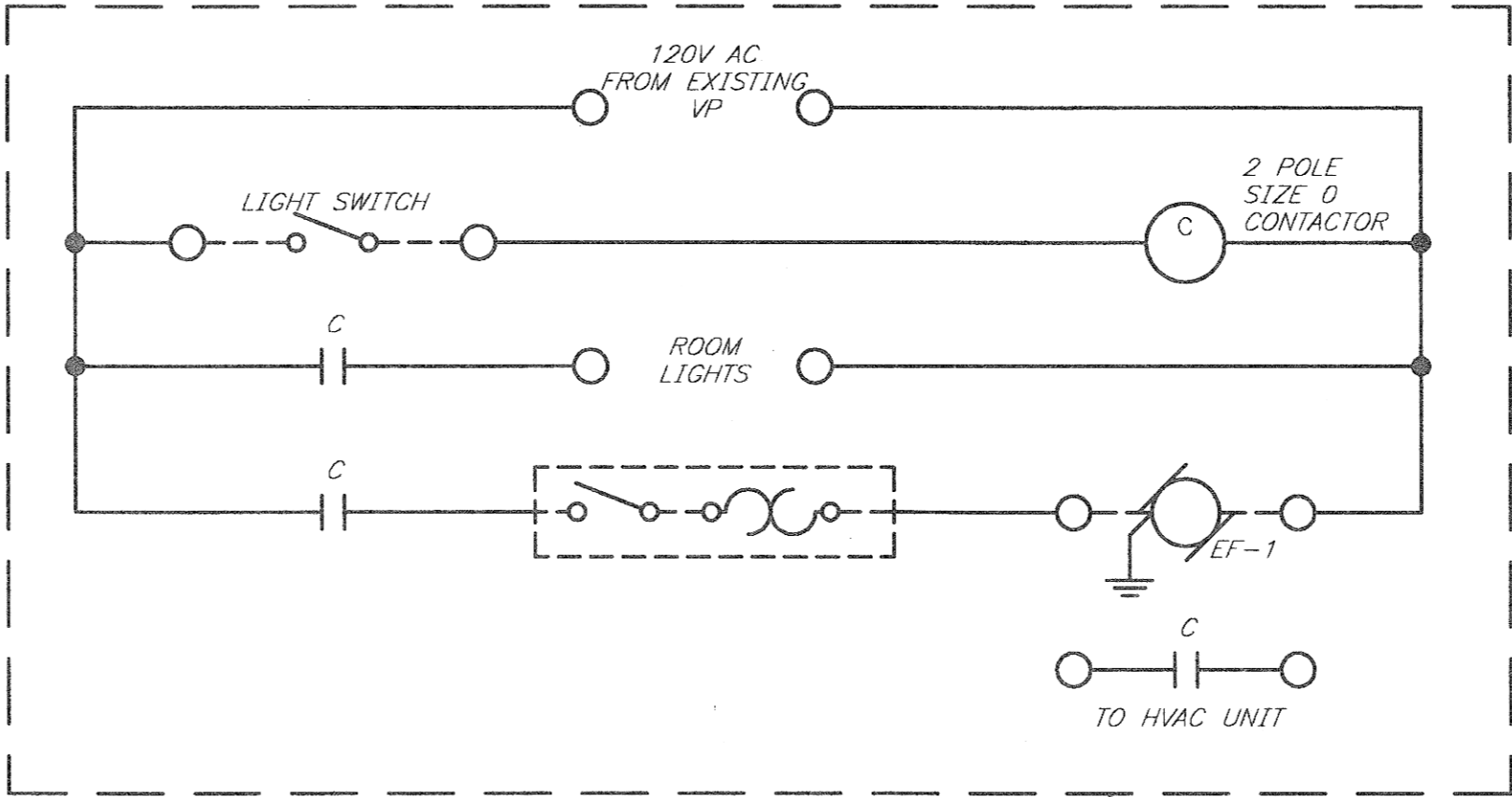
HIGH SERVICE PUMP BUILDING  
AND GENERATOR ROOM

FIRST FLOOR  
NEMA 12 AREA  
ELEV. 604.00



FLOCCULATION AND FILTER BUILDING  
FILTER GALLERY

SECOND FLOOR  
NEMA 4X AREA  
ELEV. 612.5



LOCATE IN NEMA 4X ENCLOSURE

CHEMICAL ROOM LIGHTING CONTACTOR

PROVIDE TERMINAL BLOCKS, WIRE TAGS, NAMETAGS,  
SUBPLATES, ETC.

- NOTES:
1. CONNECT TO SPARE 120V, 1P BREAKER IN VALVE PANELBOARD.

Ann Arbor, Michigan  
Detroit, Michigan  
Escanaba, Michigan  
Grand Rapids, Michigan  
Lansing, Michigan

**MMA**  
**MENAMER**  
ENGINEERING EXCELLENCE  
SINCE 1914

**MENAMER ROBERT V. SEELEY AND**  
DESIGNED *G. JONES*  
SCALE *1/8" = 1'-0"*  
PART *01/05/0225/014304/PLANT*

CHECKED *T. RITTER*  
CADD DATE *01-05-95 WDW 3*

CITY OF TRAVERSE CITY, MICHIGAN  
WATER TREATMENT PLANT IMPROVEMENTS  
SODIUM HYPOCHLORITE SYSTEM ADDITION  
**ELECTRICAL/INSTRUMENTATION**  
**MISCELLANEOUS BACKGROUND**  
**PLANS**

DIVISION  
CONTRACT  
**225.14-W-2(R)**

SHEET  
**EI-3**  
OF 6